



Spring Valley Lake Association

13325 Spring Valley Parkway

7001 SVL Box

Victorville, CA 92395-5107

Hello SVLA Residents,

This year is truly flying by. It's crazy to think we are wrapping up summer and heading into fall. While Summer is very busy time around the Association the fall will be no different for us as we head into the lake lowering and coving repairs, this project is going to keep our department busy along with our other duties. Look below to see what we have been up to this month:

Beach Areas

- Sanitizing picnic tables and playground equipment daily
- Cut Grass
- Sent in water sampling- swim/beach weekly
- Performed maintenance at Swim Beach area weekly
- Installed new roof on lifeguard tower

Parks:

- Sanitizing picnic tables and playground equipment daily
- Cut Grass
- Trimmed trees at Long Acres Park
- Repaired irrigation valve at Long Acres Park
- Repaired 2" irrigation main at MLP
- Weed abatement at MLP
- Weed Abatement at Playfair Park

Equestrian Center:

- Cut Grass
- Weed abatement at EQ center
- Replaced 2 fly pumps at EQ stables
- Completed EQ shed roofing
- Weed abatement on EQ trails
- Cleaned EQ parking lot
- Cleaned and weed abated EQ barns

Fishing Areas:

- Sanitized picnic tables
- Cut Grass
- Weed Abatement
- Installed new keypad locks on FA #8 restrooms
- Installed cameras at FA#8
- Installed electrical and diffusers pipeline at FA#9
- Installed electrical distribution box at FA #11
- Removed debris from shoreline
- Trimmed bushes

Buildings:

- Sanitized AO building, Community Building & exterior AO restrooms door handles and hard surface areas 3 times per day
- Fire Extinguisher inspection

- Fixed restroom outside AO
- Remodeled the EQ apartment
- Detailed the EQ apartment
- Paint AO sheds
- Pressure washed AO & Maintenance buildings

Grounds:

- Worked on Safety List
- Set up and cleaned up from events
- Installed Vista Point Repeater Antenna
- Installed new POE switch on parkway cameras
- Ordered new fire hose for Marina
- Replaced solar panel and controller at marina post
- Sent POS system for Marina fuel tank to be repaired
- Painted picnic tables
- Repaired 10 sprinklers at common areas
- Trimmed Parkway palms and bushes
- Cleared out weeds from greenbelt on Rancho Bonita
- Replaced lights on picnic area #1 gazebo

Floating Islands:

- Floating Islands at FA #3 & FA #12 are doing well. Aquatic plants are flowering and establishing

Wells:

- All wells are active

Lake Filtration Systems:

- Worked on aeration system
- Installed aerators and 6" pipe for the hoses
- Installed aeration boxes at FA#11, 13, 9, 8, 5
- Installed aeration system hoses at FA #10-9-13-5
- Trenched Fishing Area #6 for aeration hoses
- Installed concrete pad at FA #15 for aeration

Lake & Marina Dock Maintenance:

- Retrieved lake data
- Skimmed Lake three times a week
- Collected sample of swim area and sent to GEO monitoring weekly
- Replaced buoy #23

Budget:

- 2 Computers were replaced in Code Enforcement and funds were taken from Reserve Line 912 (\$1,249.99 each).
- Marina Fuel pump POS system was down and needed new software. The funds were taken from Reserve Line 314. This was an emergency as the system went down and the fuel system was nonoperational. (\$4,404.50).

Training:

- In the blink an eye-Eye Safety
- Health & Safety: Landscaping
- Guide to Landscape work safety
- Global COVID 19 Prevention

- OSHA First Aid in the Workplace
- OSHA Hand and Power tool safety
- How COVID 19 is transmitted
- Workplace Violence Training
- OSHA Hard Hat Safety

Year to Date Water Usage:

Date	YTD usage	FPA per year	FPA Balance	Replacement Obligation
10/8/21	72	2,073	2,001	0
10/15/21	132	2,073	1,941	0
10/22/21	178	2,073	1,895	0
10/29/21	204	2,073	1,869	0
11/12/21	237	2,073	1,836	0
11/19/21	315	2,073	1,758	0
12/10/21	423	2,073	1,650	0
12/17/21	455	2,073	1,618	0
12/23/21	465	2,073	1,608	0
12/30/21	486	2,073	1,587	0
1/07/22	501	2,073	1,572	0
1/14/22	542	2,073	1,531	0
1/21/22	571	2,073	1,502	0
1/28/22	599	2,073	1,474	0
2/4/22	638	2,073	1,435	0
2/11/22	674	2,073	1,399	0
2/18/22	714	2,073	1,359	0
2/25/22	726	2,073	1,347	0
3/4/22	770	2,073	1,303	0
3/11/22	819	2,073	1,254	0
3/18/22	864	2,073	1,209	0
3/25/22	907	2,073	1,166	0
4/1/22	964	2,703	1,109	0
4/8/22	1,021	2,703	1,052	0
4/15/22	1,079	2,703	994	0
4/22/22	1,098	2,073	975	0
4/29/22	1,125	2,073	948	0
05/07/22	1,184	2,073	889	0
5/13/22	1,240	2,073	833	0
5/20/22	1,314	2,073	759	0
5/27/22	1,376	2,073	697	0
6/3/22	1,444	2,073	629	0
6/10/22	1,510	2,073	563	0
6/17/22	1,568	2,073	505	0
6/24/22	1,644	2,073	429	0
7/01/22	1,720	2,073	353	0
7/08/22	1,785	2,073	288	0
7/15/22	1,873	2,073	200	0
7/22/22	1,973	2,073	100	0
7/29/22	2,003	2,073	70	0

8/26/22	2,275	2,073	-202	202
---------	-------	-------	------	-----

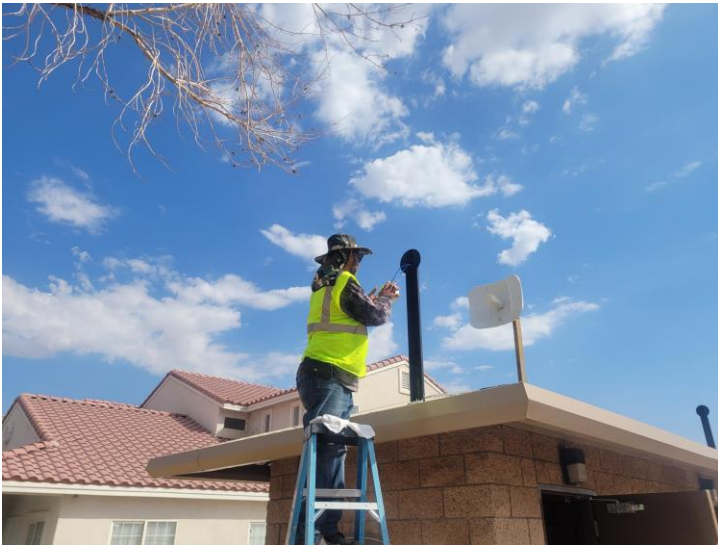
Lake Data August 18, 2022:

MARINA DOCK		Transparency	Watercolor	Wind Speed	Wind Direction	Sky	Date	Time
PH	7.09	18"	Olive	4.5 MPH	South	Clear	8/18/2022	10:08am
Nitrate	-----	DO	11.19	11.37	11.29	11.13		
Phos	-----	Temperature	54.4 °	54.1 °	53.2 °	52.6 °		
		Saturation	115.60 %	117.10 %	114.90 %	112.40 %		
			6"	2	4	6	8	10

Center of Lake		Transparency	Watercolor	Wind Speed	Wind Direction	Sky	Date	Time
PH	7.08	19"	Olive	4.5 MPH	South	Clear	8/18/22	9:02 am
Nitrate		DO	11.4	11.46	11.43	11.37		
Phos		Temperature	53° F	52.9° F	52.8° F	52.7° F		
		Saturation	115.90%	116.20%	115.90%	115.00%		
			6"	2	4	6	8	10

SOUTH END		Transparency	Watercolor	Wind Speed	Wind Direction	Sky	Date	Time
PH	7.09	20"	Olive	4.5 MPH	South	clear	8/18/22	9:25 AM
Nitrate		DO	11.15	11.09	11.09	11.05		
Phos		Temperature	53.1° F	53.2° F	53.2° F	53.1° F		
		Saturation	113.40%	113.00%	112.90 %	112.40%		
			6"	2	4	6	8	10

NORTH END		Transparency	Watercolor	Wind Speed	Wind Direction	Sky	Date	Time
PH	7.08	22"	Olive	4.5 MPH	South	clear	8/18/22	9:58 am
Nitrate		DO	11.24	11.48	11.43	11.46		
Phos		Temperature	53.2° F	52.8° F	52.3° F	52.2° F		
		Saturation	114.20%	113.00%	114.00%	115.10%		
			6"	2	4	6	8	10





Operations Training Schedule

Trainings=Blue

Functions=Red

SEPTEMBER 2022

SUN	MON	TUE	WED	THU	FRI	SAT
28	29	30	31	1	2 In the blink of an eye- Eye safety Movie in the Park	3
4	5	6	7 Health & Safety: Landscaping	8	9 Guide to Landscape work safety Wine & Design	10
11	12	13	14 Global COVID 19 Prevention	15	16 OSHA First Aid in the Workplace	17
18	19	20	21 OSHA Hand & Power tool safety	22	23 How COVID 19 is transmitted	24
25	26	27 BOD Open Meeting	28 Workplace Violence Training	29	30 OSHA Hard Hat Safety	1

The Operations Department is always working diligently on maintaining SVLA's stature as well as keeping up on regular training videos to ensure we are delivering the best service possible. If you ever notice a maintenance related issue or concern around the community, please call the Association Office (@760-245-9756) and we will do our due diligence to correct the issue(s) or concerns!