



Spring Valley Lake Association

13325 Spring Valley Parkway
7001 SVL Box
Victorville, CA 92395-5107
June 28, 2022

Hello SVLA Residents,

We have officially entered summer and the hot temperature is here to remind us. We have already geared up and are in full swing with weed abatement and event preparations along with all the other things that summer brings with it. Look below to see what we have been working on this past month.

Beach Areas

- Sanitizing picnic tables and playground equipment daily
- Cut Grass
- Replaced 3 irrigation valves at East Beach
- Sent in water sampling- swim/beach
- Replaced East Beach sprinkler valve
- Replaced basketball nets at West beach
- Installed 2 new lights at West Beach restrooms

Parks:

- Sanitizing picnic tables and playground equipment daily
- Cut Grass
- Installed new water valve at dog park
- Weed Abatement on MLP walking trails

Equestrian Center:

- Repaired sprinklers at Long Acres Park
- Cut Grass
- Weed abatement at EQ center
- Fixed main water line at Long Acres Park
- Replaced pump on EQ fly control system by the stables

Fishing Areas:

- Sanitized picnic tables
- Weed abatement all fishing areas
- Cut Grass
- Replaced sprinklers at FA#9
- Repaired 2 broken rails at FA#8
- Weed abatement at FA #6
- Installed a 6" PVC tee at fishing are #6 for water movement

Buildings:

- Sanitized AO building, Community Building & exterior AO restrooms door handles and hard surface areas 3 times per day
- Replaced batteries in all flood lights
- Painted CB entrance stucco
- Pressure washed patio furniture and patio floor at Community Center
- Adjusted light timers at AO and CB

- Installed EV charging system at CB
- Repaired broken toilet at Marina restrooms
- Replaced broken hand sanitizer dispensers

Grounds:

- Worked on Safety List
- Cleaned up V-ditches
- Repaired safety hazard on sidewalk at the Community Center
- Weed Abatement at the Association Office
- Weed abatement on Parkway entrance
- Weed abatement on Parkway Median
- Weed Abatement at CB
- Painted all picnic tables
- Assembled picnic tables
- Pressure washed picnic area #1
- Set up for Firework show
- Assembled and painted the barge for the firework show
- Picked up pine needles from center median
- Assembled banner holders

Floating Islands:

- Floating Islands at FA #3 & FA #12 are doing well. Aquatic plants are flowering and establishing

Wells:

- All wells are active

Lake Filtration Systems:

- Worked on aeration system
- Turned on all lake filter systems
- Cleaned up lake filtration system
- Building tops for the aeration system

Lake & Marina Dock Maintenance:

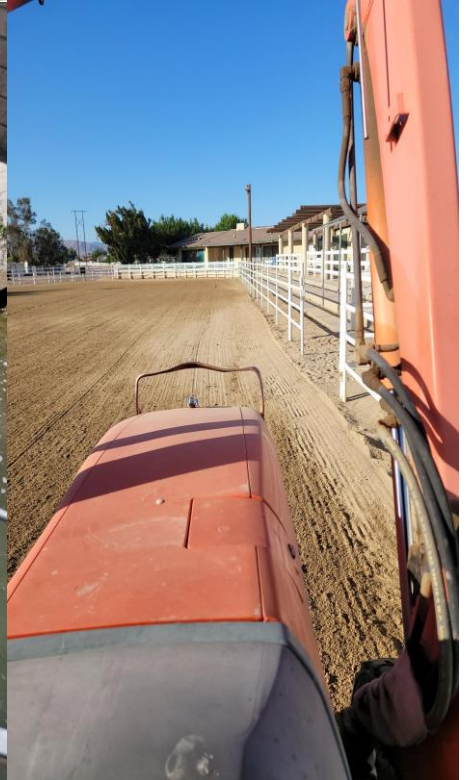
- Retrieved lake data
- Skimmed Lake three times a week
- Repaired dock main entrance
- Addressed algae build up issue near FA #6
- Replaced loose buoy #3

Training:

- OSHA top 10 Violations
- Electrical Safety Awareness
- OSHA- Heat stress
- OSHA-Falls in construction/Floor openings
- Good Teamwork & Bad Teamwork
- Safety Attitudes at work
- The Unsafe risk taker
- Fire Extinguisher training
- Fall Protection Basics

Year to Date Water Usage:

Date	YTD usage	FPA per year	FPA Balance	Replacement Obligation
10/8/21	72	2,073	2,001	0
10/15/21	132	2,073	1,941	0
10/22/21	178	2,073	1,895	0
10/29/21	204	2,073	1,869	0
11/12/21	237	2,073	1,836	0
11/19/21	315	2,073	1,758	0
12/10/21	423	2,073	1,650	0
12/17/21	455	2,073	1,618	0
12/23/21	465	2,073	1,608	0
12/30/21	486	2,073	1,587	0
1/07/22	501	2,073	1,572	0
1/14/22	542	2,073	1,531	0
1/21/22	571	2,073	1,502	0
1/28/22	599	2,073	1,474	0
2/4/22	638	2,073	1,435	0
2/11/22	674	2,073	1,399	0
2/18/22	714	2,073	1,359	0
2/25/22	726	2,073	1,347	0
3/4/22	770	2,073	1,303	0
3/11/22	819	2,073	1,254	0
3/18/22	864	2,073	1,209	0
3/25/22	907	2,073	1,166	0
4/1/22	964	2,703	1,109	0
4/8/22	1,021	2,703	1,052	0
4/15/22	1,079	2,703	994	0
4/22/22	1,098	2,073	975	0
4/29/22	1,125	2,073	948	0
05/07/22	1,184	2,073	889	0
5/13/22	1,240	2,073	833	0
5/20/22	1,314	2,073	759	0
5/27/22	1,376	2,073	697	0
6/3/22	1,444	2,073	629	0
6/10/22	1,510	2,073	563	0
6/17/22	1,568	2,073	505	0





Lake Data June 10, 2022:

MARINA DOCK		Transparency	Watercolor	Wind Speed	Wind Direction	Sky	Date	Time
PH	7.09	18"	Olive	4.5 MPH	South	Clear	6/10/2022	1:28pm
Nitrate	-----	DO	11.19	11.37	11.29	11.13		
Phos	-----	Temperature	54.4 °	54.1 °	53.2 °	52.6 °		
		Saturation	115.60 %	117.10 %	114.90 %	112.40 %		
			6"	2	4	6	8	10

Center of Lake		Transparency	Watercolor	Wind Speed	Wind Direction	Sky	Date	Time
PH	7.08	19"	Olive	4.5 MPH	South	Clear	6/10/22	9:07 am
Nitrate		DO	11.4	11.46	11.43	11.37		
Phos		Temperature	53° F	52.9° F	52.8° F	52.7° F		
		Saturation	115.90%	116.20%	115.90%	115.00%		
			6"	2	4	6	8	10

SOUTH END		Transparency	Watercolor	Wind Speed	Wind Direction	Sky	Date	Time
PH	7.09	20"	Olive	4.5 MPH	South	clear	6/10/22	9:40 AM
Nitrate		DO	11.15	11.09	11.09	11.05		
Phos		Temperature	53.1° F	53.2° F	53.2° F	53.1° F		
		Saturation	113.40%	113.00%	112.90 %	112.40%		
			6"	2	4	6	8	10

NORTH END		Transparency	Watercolor	Wind Speed	Wind Direction	Sky	Date	Time
PH	7.08	22"	Olive	4.5 MPH	South	clear	6/10/22	9:55 am
Nitrate		DO	11.24	11.48	11.43	11.46		
Phos		Temperature	53.2° F	52.8° F	52.3° F	52.2° F		
		Saturation	114.20%	113.00%	114.00%	115.10%		
			6"	2	4	6	8	10



Operations Training Schedule

June 2022

Trainings=Blue

Functions=Red

Sunday	Monday	Tuesday	Wednesday	Thursday	Friday	Saturday
			1 OSHA- Top 10 Violations Training	2	3 Electrical safety awareness	4
5	6	7	8 OSHA- Heat Stress Training	9	10 OSHA- Falls in Construction/Floor Openings	11
12	13	14	15 Good Team Work & Bad Teamwork Training	16	17 Safety Attitudes at work Kick Off Concert	18
19	20	21 BOD Open Meeting	22 The Unsafe Risk Taker	23	24 Fire Extinguisher Training	25
26	27	28	29 Fall Protection Basics	30		

The Operations Department is always working diligently on maintaining SVLA's stature as well as keeping up on regular training videos to ensure we are delivering the best service possible. If you ever notice a maintenance related issue or concern around the community, please call the Association Office (@760-245-9756) and we will do our due diligence to correct the issue(s) or concerns!